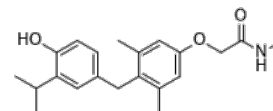


**Product Name** : Sob-AM2  
**Cat. No.** : PC-25536  
**CAS No.** : 2128258-47-7  
**Molecular Formula** : C<sub>21</sub>H<sub>27</sub>NO<sub>3</sub>  
**Molecular Weight** : 341.45  
**Target** : Thyroid Hormone Receptor (THR)  
**Solubility** : 10 mM in DMSO



### Biological Activity

Sob-AM2 is the CNS-selective prodrug of thyroid hormone analog sobetirome (Thyromimetic GC-1, QRX-431), which is a potent T3 mimic that binds to the TH receptors with subtype selectivity for thyroid hormone receptor beta (TR $\beta$ ) over thyroid hormone receptor alpha (TR $\alpha$ ).

### References

Bárez-López S, et al. Thyroid. 2018 Sep;28(9):1211-1220.

**Caution: Product has not been fully validated for medical applications. Lab Use Only!**

E-mail: tech@probechem.com